

## Selective modulation of power

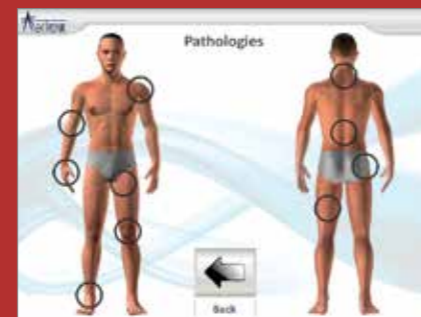
iLux RED emits red laser light at 650nm with an adjustable power from 0 to 2000mW with 100mW steps. Thanks to its ability to selectively modulate the laser emission, both at low and high powers, iLux RED is an indispensable ally in daily practice, which allows you to implement LLLT methods and increasing and optimizing the treatment if necessary by using high intensity. Low Level Laser Therapy and High Power Laser Therapy merge into a single, secure, powerful and effective device: iLux RED.

## Unique with 7 Emission modes

With a simple setting it is possible to choose between 7 emission modes, each with different benefits and characteristics - a range of possibilities with which to best treat the chronic and acute problems of patients.

## Pathological library

iLux RED contains a large interactive database containing over 60 pathologies which guides the operator through the treatment. 3D illustrations and step-by-step explanations provide clear and simple instructions for the operator, guaranteeing reliability and precision starting from the very first use.



## ScanX Mode

Thanks to a patented magnetic cone, iLux RED can easily be used as an operator-independent laser. With one simple command it is possible to change mode. Flexibility, practicality, and high therapeutic performance: iLux RED is the ideal partner for your daily working routine.

### Dedicated Protocols

The ScanX mode features a dedicated pathology library with over 60 pathologies and relative interactive protocols, sub-divided by phase.

### ScanX cone applicator

The ScanX applicator is made of a special biocompatible material, perfectly tolerable by the patient.

### Safety button

The ScanX mode provides the patient with the ability to interrupt the treatment thanks to the innovative and practical safety button.

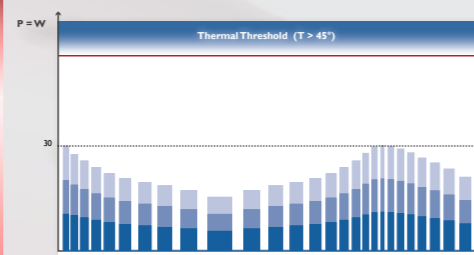
## MRT System

iLux RED has "Magnetic Release Technology" – the MRT System features a finger switch, and a variety of laser applicators, as Standard divergent, Zoom-Focusable, Deep Tissue therapy, ENT and Sapphire Surgery, making iLux RED a multi-task device for photo-biomodulation therapy.



## E<sup>2</sup>C System

iLux RED uses a patented E<sup>2</sup>C stochastic laser emission system. Thanks to its natural thermal mode, E<sup>2</sup>C allows therapeutic results to be maximized with total safety, limiting the thermal effects on tissues.



MECTRONIC MEDICALE srl  
Via Orio al Serio, 15  
Grassobbio (BG) - Italy

Tel +39 035656080  
Fax +39 035657361  
www.mectronicmedicale.com  
info@mectronicmedicale.it

# iLux RED 650

## The high power red laser



# iLux RED 650

## The most advanced red laser

iLux RED Laser is an innovative and new concept which uses red laser light at 650nm to treat musculo-skeletal pathologies, with elective applications such as photo dynamic therapy, the treatment of ulcers, injuries and wounds and the treatment of oral mucositis.

The result of Mectronic's 30 years of technical know-how, today iLux RED represents a reference point for the high power laser photo-biomodulation.

### A 360° Photo-biomodulation and rehabilitation tool

iLux RED is able to offer a wide range of settings and customisation, effective therapy for all your needs.

### Compact and powerful

iLux RED is light, compact and easily portable. Thanks to its multi-mode emission, iLux RED emits red laser light in Continuous, Pulsed, Super-pulsed, and E<sup>2</sup>C Patented Stochastic mode.

### An interactive experience

The touch-screen guides you through therapy management in a simple, intuitive way; effective from the very first use.

### E<sup>2</sup>C System

iLux RED uses a patented E<sup>2</sup>C stochastic laser emission system. Thanks to its natural thermal mode, E<sup>2</sup>C allows therapeutic results to be maximized with total safety, limiting the heat transferred to the patient.

### The power of light

The high energy of iLux RED, together with the precision and depth of action, allows this device to achieve excellent results with muscular and skeletal pathologies. iLux RED relieves pain, reduces swelling and accelerates physical recovery.

It is well known that LLLT photo-biomodulation has proven results in the treatment of wounds and oral mucositis.

iLux RED increases the therapeutic results thanks to its high intensity multi-mode emission (2000mW).



## Indications

- Oral mucositis
- Hyposalivation and xerostomia
- Lymphoedema
- Skin cancer
- Soft tissue injuries
- Wound healing
- PDT
- Nerve regeneration
- Acute or chronic tendinopathies
- Sprains and strains
- Neck and back pain
- Osteoarthritis
- Post-operative pain
- Tissue healing

## PDT: Photo dynamic therapy

Photodynamic therapy (PDT) is a veterinary and medical therapy used to treat a variety of conditions. iLux RED can be used to either inhibit or stimulate cells directly or to affect a drug injected into the body, creating a reaction to help the patient's treatment. iLux RED, thanks to its high power adjustable from 0 to 2000mW with 100mW steps, and its multi-mode emission, is a flexible and powerful ally in photo dynamic therapy.

## Oral Mucositis

Many pieces of scientific researches have been published in recent years that show that Low-level laser therapy (LLLT) has some preventive and curative effects against oral mucositis.

iLux RED, thanks to the high power multi-mode emission, increases the therapeutic result of the laser against oral mucositis. Better results in a shorter treatment times: iLux RED, simply the best!

## Wounds

Tissue healing as one of the main effects of iLux RED and can be characterized by three main factors:

- **Incrementation of ATP production:** laser light is thought to raise the production of ATP, leading to a boost in mitotic activity and to an increase in protein synthesis by mitochondria, resulting in greater tissue regeneration in the repair process.
- **Activation of microcirculation:** iLux RED, thanks to its multi-mode emission, increases the delivery of nutritional elements associated with increased speed of mitosis, facilitating cell multiplication.
- **Creation of new vessels are formed from preexisting vessels:** thanks to its high power and its multi-mode emission, iLux RED can increase the tissue regeneration and healing the wounds.

## Technical specifications

Technology	Mectronic's own MecOS Real-Time Operating System
Wavelength	650 nm
Guide Light	650 nm - 3 mW
Laser power	500 mW - 2000 mW
Emission	Continuous (CW), Pulsed, Super-pulsed, and E <sup>2</sup> C (patented stochastic mode)
Operating Modes	Manual, Single Pulse, Burst and Custom mode
Special Modes	Joule, Timer, and Trigger point modes
MRT System	Handpiece with a finger switch and magnetic release technology, with a variety applicators: Standard Divergent, Zoom-Focusable, Ball-Deep Tissue, Sapphire and ENT
Calibration	Graphic and acoustic control system for the laser emission at handpiece based on normative CEI EN 60825-1
Display	TFT 5,7" colour touch-screen
Power Supply	100÷240V 50÷60Hz
Electrical Input	160 VA
Dimensions	320 x 245 x 130 mm
Weight	3 kg
Laser Class	IV
Compliance	IEC/EC 60601-1 60601-1-2
Directive 93/42	IIb Classification

